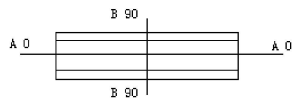
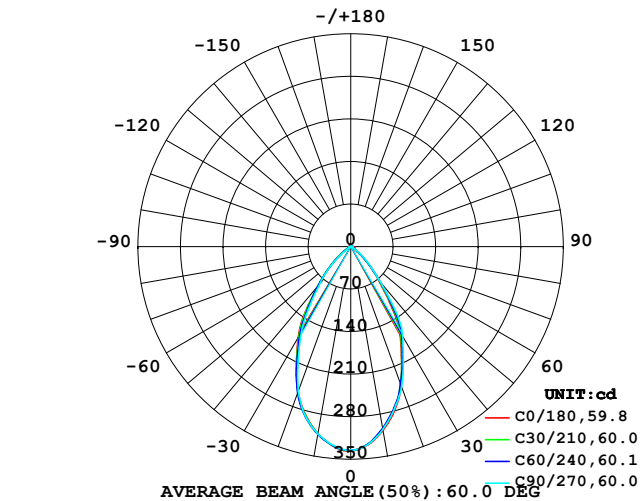


LUMINAIRE PHOTOMETRIC TEST REPORT

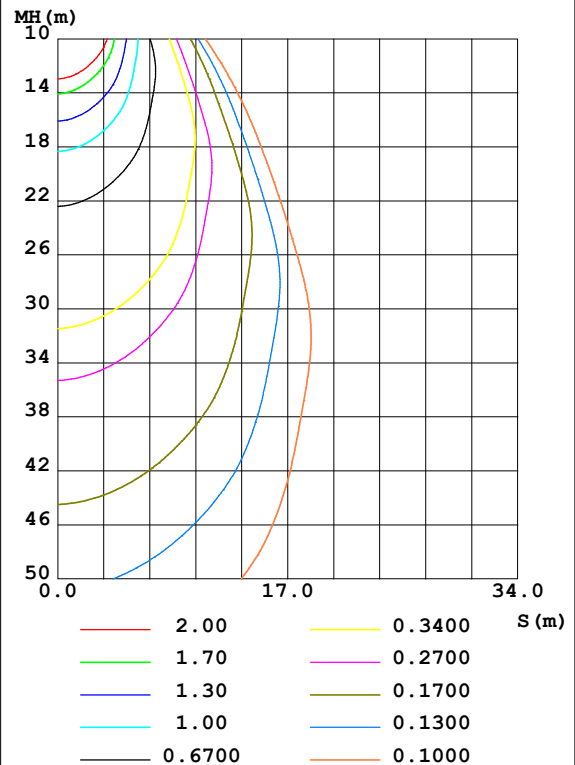
Test:U:24.00V I:0.198A P:4.75W PF:1.000 Freq:0Hz Lamp Flux:336.18x1 lm		
NAME: 62411 2000-6500K	TYPE:	WEIGHT:
SPEC.:	DIM.:	SERIAL No.: 2025062602
MFR.:	SUR.:	Shielding Angle:

DATA OF LAMP		PHOTOMETRIC DATA Eff: 70.75 lm/W			
MODEL		I _{max} (cd)	336.6	S/MH (C0/180)	0.89
NOMINAL POWER (W)		LOR (%)	100.0	S/MH (C90/270)	0.88
RATED VOLTAGE (V)	24	TOTAL FLUX (lm)	336.18	η UP, DN (C0-180)	0.1, 50.5
NOMINAL FLUX (lm)	336.18	CIE CLASS	DIRECT	η UP, DN (C180-360)	0.0, 49.5
LAMPS INSIDE	1	η up (%)	0.1	CIBSE SHR NOM	0.75
TEST VOLTAGE (V)	24	η down (%)	99.9	CIBSE SHR MAX	0.95

LUMINOUS INTENSITY DISTRIBUTION DIAGRAM



C0 PLANE ISOLUX DIAGRAM (UNIT:lx)



C Range: 0 - 360DEG
C Interval: 15.0DEG
Test Speed: HIGH
Temperature: 25DEG
Operators: SENPU
Test Date: 2025-06-26

γ Range: 0 - 100DEG
γ Interval: 1.0DEG
Test System: EVERFINE GO-2000B_V1 SYSTEM V2.00.444
Humidity: 61%
Test Distance: 8.000m [K=1.0000]
Remarks:

ZONAL FLUX DIAGRAM

ZONAL FLUX DIAGRAM:

γ	C0	C45	C90	C135	C180	C225	C270	C315	γ	Φ zone	Φ total	%lum,lamp
10	307.0	304.7	305.3	311.2	312.2	311.9	312.7	306.6	0- 10	30.67	30.67	9.12,9.12
20	242.4	241.3	245.3	251.7	254.4	253.1	252.6	238.4	10- 20	78.71	109.4	32.5,32.5
30	161.9	168.4	171.5	177.6	173.1	167.7	162.7	155.7	20- 30	94.14	203.5	60.5,60.5
40	70.83	77.20	75.55	88.34	82.16	82.98	78.27	71.33	30- 40	75.69	279.2	83.1,83.1
50	22.31	23.21	25.73	29.56	30.24	28.89	25.07	21.30	40- 50	37.83	317.0	94.3,94.3
60	4.091	4.110	4.444	5.675	5.380	4.268	3.729	3.549	50- 60	11.00	328.0	97.6,97.6
70	4.234	2.274	2.285	2.605	4.534	2.433	2.439	2.459	60- 70	3.490	331.5	98.6,98.6
80	4.882	1.490	1.369	1.473	4.617	1.334	1.620	1.909	70- 80	2.737	334.3	99.4,99.4
90	0.3306	0.2615	0.6752	1.032	0.4836	0.1053	0.0523	0.0613	80- 90	1.666	335.9	99.9,99.9
100	0.2615	0.2702	0.2353	0.2441	0.0958	0.0872	0.0523	0.0610	90-100	0.2370	336.2	100,100
110	0	0	0	0	0	0	0	0	100-110	0.0093	336.2	100,100
120	0	0	0	0	0	0	0	0	110-120	0	336.2	100,100
130	0	0	0	0	0	0	0	0	120-130	0	336.2	100,100
140	0	0	0	0	0	0	0	0	130-140	0	336.2	100,100
150	0	0	0	0	0	0	0	0	140-150	0	336.2	100,100
160	0	0	0	0	0	0	0	0	150-160	0	336.2	100,100
170	0	0	0	0	0	0	0	0	160-170	0	336.2	100,100
180	0	0	0	0	0	0	0	0	170-180	0	336.2	100,100
DEG	LUMINOUS INTENSITY:cd									UNIT:lm		

Conical surface Flux(90deg): 302.33 lm

%lum = 89.9%

%lamp = 89.9%

Conical surface Flux(120deg): 328.04 lm

%lum = 97.6%

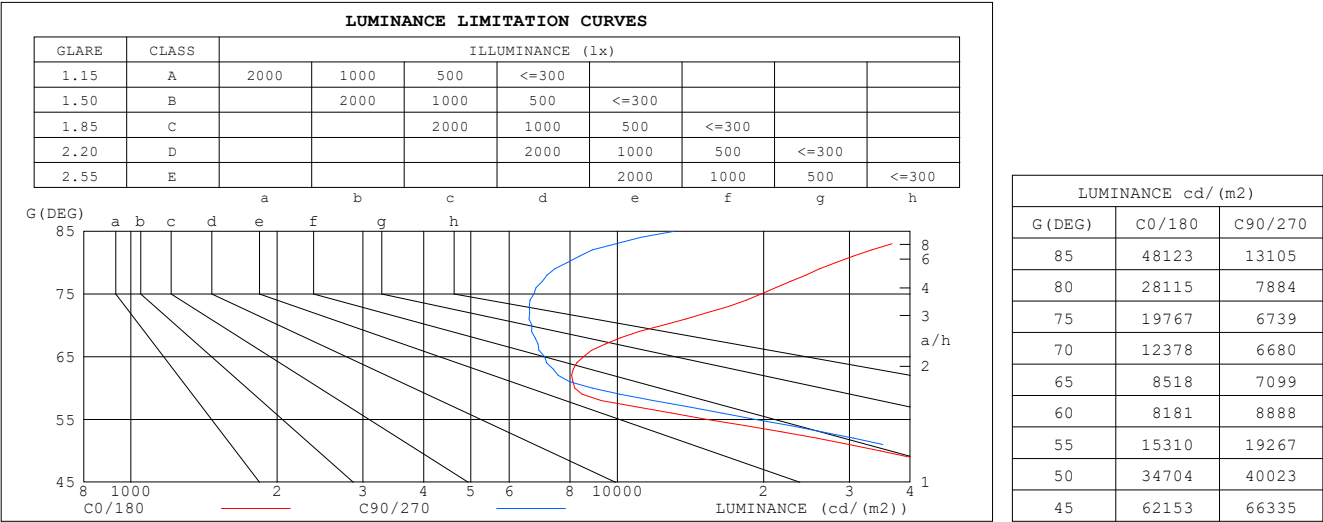
%lamp = 97.6%

C Range: 0 - 360DEG
 C Interval: 15.0DEG
 Test Speed: HIGH
 Temperature:25DEG
 Operators:SENPU
 Test Date:2025-06-26

γ Range: 0 - 100DEG
 γ Interval: 1.0DEG
 Test System:EVERFINE GO-2000B_V1 SYSTEM V2.00.444
 Humidity:61%
 Test Distance:8.000m [K=1.0000]
 Remarks:

LUMINANCE LIMITATION CURVES

Test:U:24.00V I:0.198A P:4.75W PF:1.000 Freq:0Hz Lamp Flux:336.18x1 lm		
NAME: 62411 2000-6500K	TYPE:	WEIGHT:
SPEC.:	DIM.:	SERIAL No.: 2025062602
MFR.:	SUR.:	Shielding Angle:



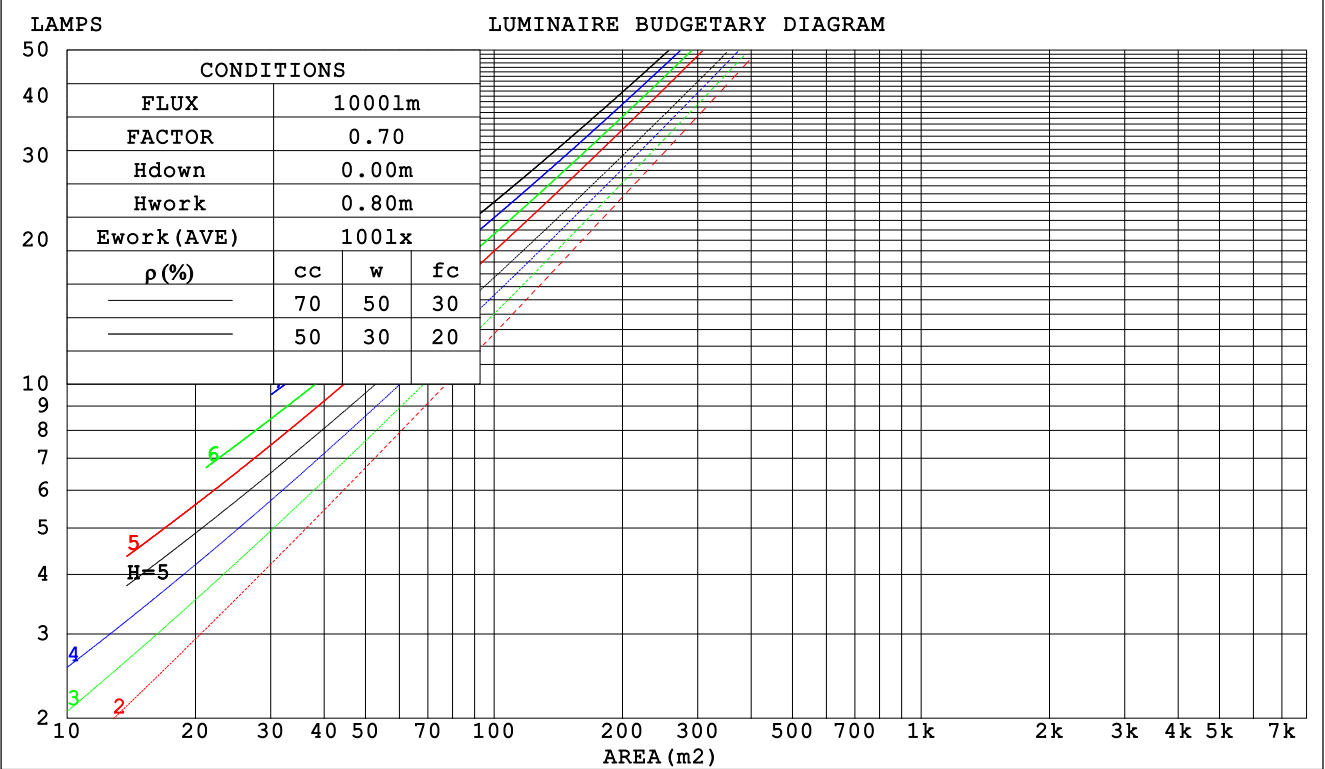
C Range: 0 - 360DEG
C Interval: 15.0DEG
Test Speed: HIGH
Temperature:25DEG
Operators:SENPU
Test Date:2025-06-26

γ Range: 0 - 100DEG
γ Interval: 1.0DEG
Test System:EVERFINE GO-2000B_V1 SYSTEM V2.00.444
Humidity:61%
Test Distance:8.000m [K=1.0000]
Remarks:

CU AND LUMINAIRE BUDGETARY ESTIMATE DIAGRAM

Test:U:24.00V I:0.198A P:4.75W PF:1.000 Freq:0Hz		
Lamp Flux:336.18x1 lm		
NAME: 62411 2000-6500K	TYPE:	WEIGHT:
SPEC.:	DIM.:	SERIAL No.: 2025062602
MFR.:	SUR.:	Shielding Angle:

ρcc	80%			70%			50%			30%			10%			0
ρw	50%	30%	10%	50%	30%	10%	50%	30%	10%	50%	30%	10%	50%	30%	10%	0
ρfc	20%			20%			20%			20%			20%			0
RCR	RCR:Room Cavity Ratio						Coefficients of Utilization(CU)									
0.0	1.19	1.19	1.19	1.16	1.16	1.16	1.11	1.11	1.11	1.06	1.06	1.06	1.02	1.02	1.02	.00
1.0	1.10	1.07	1.04	1.07	1.05	1.03	1.03	1.01	.99	.00	.98	.97	.96	.95	.94	.92
2.0	1.01	.97	.93	.99	.95	.92	.96	.93	.90	.93	.90	.88	.90	.88	.86	.84
3.0	.93	.88	.83	.92	.87	.83	.89	.85	.81	.87	.83	.80	.84	.81	.79	.77
4.0	.86	.80	.76	.85	.80	.75	.83	.78	.74	.81	.77	.73	.79	.75	.73	.71
5.0	.80	.74	.69	.79	.73	.69	.77	.72	.68	.76	.71	.68	.74	.70	.67	.65
6.0	.75	.68	.64	.74	.68	.63	.72	.67	.63	.71	.66	.62	.69	.65	.62	.60
7.0	.70	.63	.59	.69	.63	.58	.68	.62	.58	.66	.62	.58	.65	.61	.57	.56
8.0	.65	.59	.54	.65	.59	.54	.64	.58	.54	.62	.57	.54	.61	.57	.54	.52
9.0	.61	.55	.51	.61	.55	.51	.60	.54	.50	.59	.54	.50	.58	.53	.50	.49
10.0	.58	.51	.47	.57	.51	.47	.56	.51	.47	.56	.51	.47	.55	.50	.47	.45



C Range: 0 - 360DEG
C Interval: 15.0DEG
Test Speed: HIGH
Temperature:25DEG
Operators:SENPU
Test Date:2025-06-26

γ Range: 0 - 100DEG
γ Interval: 1.0DEG
Test System:EVERFINE GO-2000B_V1 SYSTEM V2.00.444
Humidity:61%
Test Distance:8.000m [K=1.0000]
Remarks:

WEC AND CCEC

Test:U:24.00V I:0.198A P:4.75W PF:1.000 Freq:0Hz Lamp Flux:336.18x1 lm		
NAME: 62411 2000-6500K	TYPE:	WEIGHT:
SPEC.:	DIM.:	SERIAL No.: 2025062602
MFR.:	SUR.:	Shielding Angle:

pcc	80%			70%			50%			30%			10%			0	
pw	50%	30%	10%	50%	30%	10%	50%	30%	10%	50%	30%	10%	50%	30%	10%	0	
pfc	20%			20%			20%			20%			20%			0	
RCR	RCR:Room Cavity Ratio						Wall Exitance Coefficients(WEC)										
0.0																	
1.0	.199	.113	.036	.192	.110	.035	.180	.103	.033	.168	.097	.031	.157	.091	.029		
2.0	.190	.104	.032	.184	.102	.031	.174	.097	.030	.164	.092	.029	.154	.087	.028		
3.0	.181	.096	.029	.176	.094	.028	.166	.090	.027	.158	.086	.027	.150	.083	.026		
4.0	.171	.089	.026	.167	.087	.026	.159	.084	.025	.151	.081	.025	.145	.079	.024		
5.0	.163	.083	.024	.159	.082	.024	.152	.079	.023	.145	.077	.023	.139	.074	.022		
6.0	.155	.078	.022	.151	.077	.022	.145	.074	.022	.139	.072	.021	.134	.070	.021		
7.0	.147	.073	.021	.144	.072	.021	.139	.070	.020	.134	.069	.020	.129	.067	.020		
8.0	.141	.069	.019	.138	.068	.019	.133	.066	.019	.128	.065	.019	.124	.064	.019		
9.0	.134	.065	.018	.132	.064	.018	.127	.063	.018	.123	.062	.018	.119	.061	.017		
10.0	.128	.062	.017	.126	.061	.017	.122	.060	.017	.118	.059	.017	.115	.058	.017		

pcc	80%			70%			50%			30%			10%			0
pw	50%	30%	10%	50%	30%	10%	50%	30%	10%	50%	30%	10%	50%	30%	10%	0
pfc	20%			20%			20%			20%			20%			0
RCR	RCR:Room Cavity Ratio						Ceiling Cavity Exitance Coefficients (CCEC)									
0.0	.191	.191	.191	.163	.163	.163	.111	.111	.111	.064	.064	.064	.020	.020	.020	
1.0	.173	.158	.144	.148	.135	.124	.101	.093	.086	.058	.054	.050	.019	.017	.016	
2.0	.159	.133	.111	.136	.114	.096	.093	.079	.067	.054	.046	.039	.017	.015	.013	
3.0	.148	.114	.088	.127	.099	.076	.087	.068	.053	.050	.040	.031	.016	.013	.010	
4.0	.138	.100	.070	.119	.086	.061	.082	.060	.043	.047	.035	.026	.015	.011	.008	
5.0	.130	.088	.058	.112	.077	.050	.077	.053	.036	.045	.031	.021	.014	.010	.007	
6.0	.123	.079	.048	.106	.069	.042	.073	.048	.030	.042	.028	.018	.014	.009	.006	
7.0	.117	.072	.041	.100	.062	.036	.069	.044	.025	.040	.026	.015	.013	.008	.005	
8.0	.111	.066	.035	.095	.057	.031	.066	.040	.022	.038	.024	.013	.012	.008	.004	
9.0	.106	.061	.030	.091	.053	.027	.063	.037	.019	.037	.022	.011	.012	.007	.004	
10.0	.101	.057	.027	.087	.049	.023	.060	.035	.017	.035	.020	.010	.011	.007	.003	

C Range: 0 - 360DEG
C Interval: 15.0DEG
Test Speed: HIGH
Temperature:25DEG
Operators:SENPU
Test Date:2025-06-26

γ Range: 0 - 100DEG
γ Interval: 1.0DEG
Test System:EVERFINE GO-2000B_V1 SYSTEM V2.00.444
Humidity:61%
Test Distance:8.000m [K=1.0000]
Remarks:

UGR(Unified Glare Rating) Table

Test:U:24.00V I:0.198A P:4.75W PF:1.000 Freq:0Hz Lamp Flux:336.18x1 lm										
NAME: 62411 2000-6500K					TYPE:			WEIGHT:		
SPEC.:					DIM.:			SERIAL No.: 2025062602		
MFR.:					SUR.:			Shielding Angle:		
ceiling/cavity	0.7	0.7	0.5	0.5	0.3	0.7	0.7	0.5	0.5	0.3
walls	0.5	0.3	0.5	0.3	0.3	0.5	0.3	0.5	0.3	0.3
working plane	0.2	0.2	0.2	0.2	0.2	0.2	0.2	0.2	0.2	0.2
Room dimensions	Viewed crosswise					Viewed endwise				
x = 2H y = 2H	22.5	23.5	22.7	23.7	23.9	22.8	23.8	23.0	24.0	24.2
3H	22.5	23.5	22.8	23.7	23.9	22.7	23.6	22.9	23.8	24.0
4H	22.8	23.7	23.1	23.9	24.1	22.6	23.5	22.9	23.8	24.0
6H	23.2	24.0	23.5	24.3	24.5	22.6	23.4	22.9	23.7	23.9
8H	23.4	24.2	23.7	24.5	24.8	22.6	23.4	22.9	23.7	23.9
12H	23.8	24.6	24.1	24.9	25.1	22.6	23.4	22.9	23.6	23.9
4H 2H	22.2	23.2	22.5	23.4	23.6	22.6	23.5	22.8	23.7	23.9
3H	22.3	23.1	22.7	23.4	23.7	22.5	23.3	22.8	23.5	23.8
4H	22.7	23.5	23.1	23.8	24.1	22.5	23.2	22.8	23.5	23.8
6H	23.2	23.9	23.6	24.2	24.5	22.5	23.1	22.8	23.4	23.8
8H	23.6	24.1	24.0	24.5	24.9	22.5	23.1	22.9	23.4	23.8
12H	24.1	24.6	24.5	25.0	25.4	22.5	23.0	22.9	23.4	23.8
8H 4H	22.6	23.2	23.0	23.6	24.0	22.4	22.9	22.8	23.3	23.7
6H	23.2	23.7	23.6	24.1	24.5	22.4	22.9	22.8	23.3	23.7
8H	23.6	24.0	24.0	24.4	24.9	22.5	22.9	22.9	23.3	23.8
12H	24.2	24.6	24.7	25.0	25.5	22.6	22.9	23.0	23.4	23.9
12H 4H	22.6	23.1	23.0	23.5	23.9	22.3	22.9	22.7	23.2	23.6
6H	23.2	23.6	23.6	24.0	24.4	22.4	22.8	22.9	23.2	23.7
8H	23.6	23.9	24.1	24.4	24.9	22.5	22.8	23.0	23.3	23.8
Variations with the observer position at spacings(CIE Pub.117):										
S = 1.0H	+ 1.5 / - 2.4					+ 2.3 / - 5.0				
1.5H	+ 2.4 / - 2.2					+ 3.5 / - 4.8				
2.0H	+ 3.3 / - 1.5					+ 5.0 / - 4.1				

CIE Pub.117, 336.2 lm Total Lamp Luminous Flux Corrected ($8\log(F/F_0) = -3.8$)
Area: 0.001 m²

C Range: 0 - 360DEG
C Interval: 15.0DEG
Test Speed: HIGH
Temperature:25DEG
Operators:SENPU
Test Date:2025-06-26

γ Range: 0 - 100DEG
 γ Interval: 1.0DEG
Test System:EVERFINE GO-2000B_V1 SYSTEM V2.00.444
Humidity:61%
Test Distance:8.000m [K=1.0000]
Remarks:

UTILIZATION FACTORS TABLE

Test:U:24.00V I:0.198A P:4.75W PF:1.000 Freq:0Hz Lamp Flux:336.18x1 lm		
NAME: 62411 2000-6500K	TYPE:	WEIGHT:
SPEC.:	DIM.:	SERIAL No.: 2025062602
MFR.:	SUR.:	Shielding Angle:

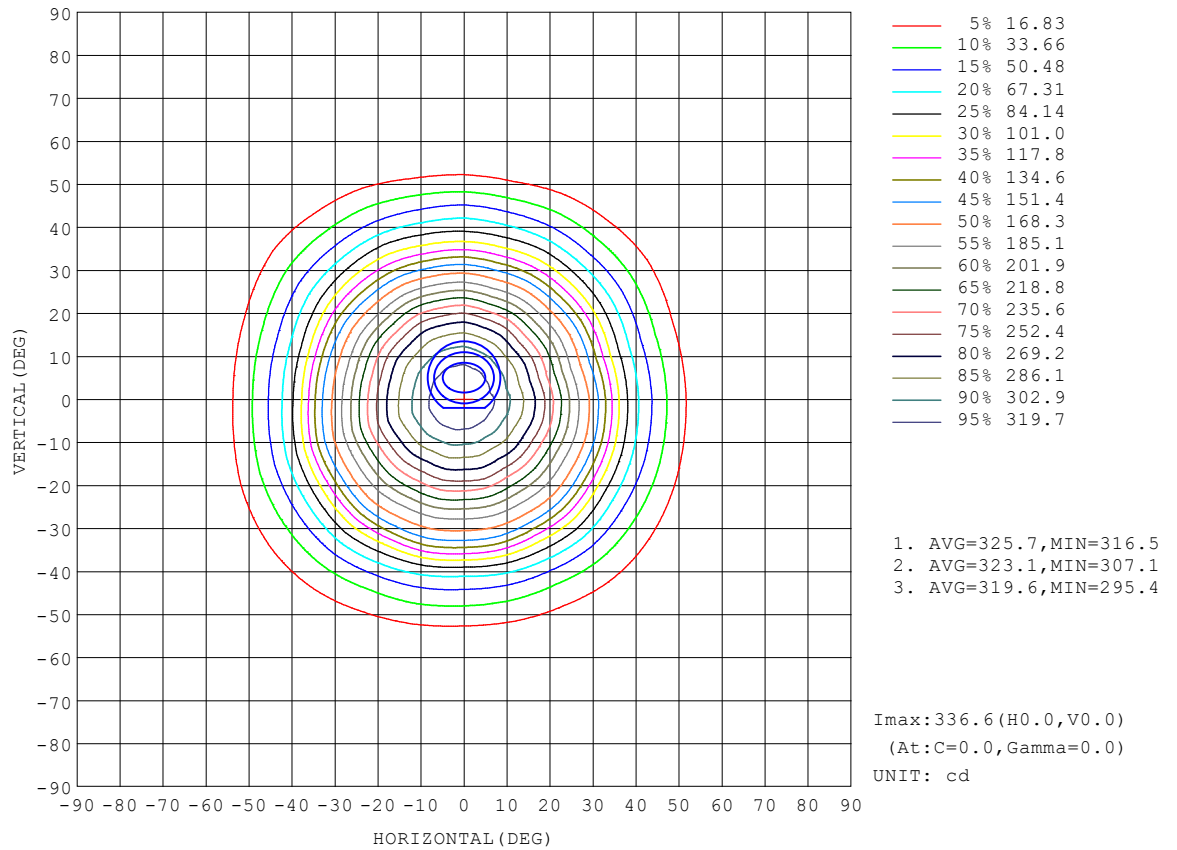
REFLECTANCE										
Ceiling	0.8	0.8	0.8	0.7	0.7	0.7	0.5	0.5	0.5	0
Walls	0.7	0.5	0.3	0.7	0.5	0.3	0.7	0.5	0.3	0
Working plane	0.2	0.2	0.2	0.2	0.2	0.2	0.2	0.2	0.2	0
ROOM INDEX	UTILIZATION FACTORS (PERCENT) $k(RI) \times RCR = 5$									
$k = 0.60$	81	73	69	80	73	69	79	73	69	64
0.80	89	82	78	88	82	78	87	81	77	73
1.00	95	88	84	94	88	84	92	88	83	79
1.25	100	94	89	99	93	89	96	92	88	84
1.50	103	97	93	102	96	93	99	95	92	87
2.00	106	101	98	105	100	97	102	98	95	90
2.50	108	104	100	107	103	99	103	100	98	91
3.00	110	106	103	108	105	102	105	102	100	93
4.00	112	109	106	110	107	105	107	104	102	95
5.00	114	111	109	112	109	107	107	106	104	96
ROOM INDEX	UF (total)									Direct
According to DIN EN 13032-2 2004			Suspended					SHRNOM = 1.25		

C Range: 0 - 360DEG
 C Interval: 15.0DEG
 Test Speed: HIGH
 Temperature: 25DEG
 Operators: SENPU
 Test Date: 2025-06-26

γ Range: 0 - 100DEG
 γ Interval: 1.0DEG
 Test System: EVERFINE GO-2000B_V1 SYSTEM V2.00.444
 Humidity: 61%
 Test Distance: 8.000m [K=1.0000]
 Remarks:

ISOCANDELA DIAGRAM

Test:U:24.00V I:0.198A P:4.75W PF:1.000 Freq:0Hz Lamp Flux:336.18x1 lm		
NAME: 62411 2000-6500K	TYPE:	WEIGHT:
SPEC.:	DIM.:	SERIAL No.: 2025062602
MFR.:	SUR.:	Shielding Angle:

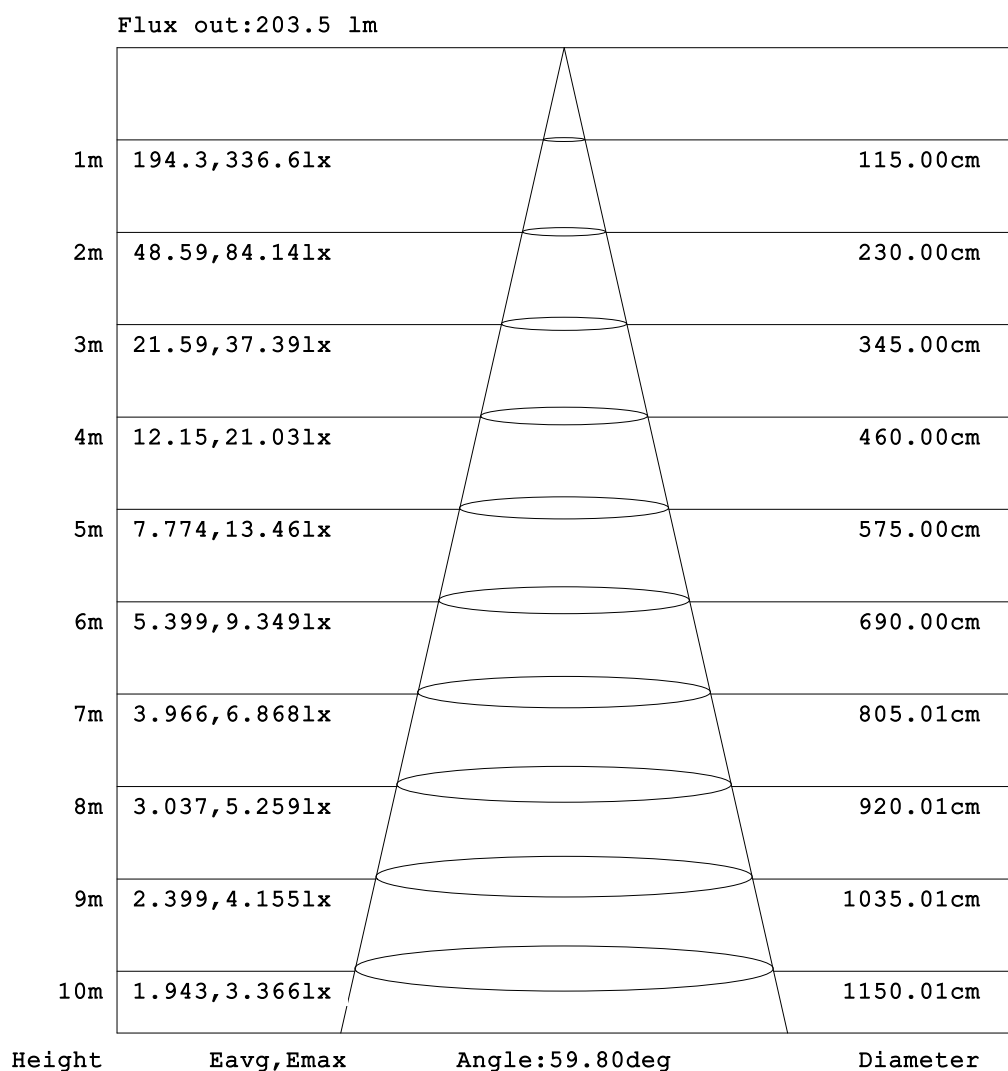


C Range: 0 - 360DEG
C Interval: 15.0DEG
Test Speed: HIGH
Temperature:25DEG
Operators:SENPU
Test Date:2025-06-26

γ Range: 0 - 100DEG
 γ Interval: 1.0DEG
Test System:EVERFINE GO-2000B_V1 SYSTEM V2.00.444
Humidity:61%
Test Distance:8.000m [K=1.0000]
Remarks:

AAI Figure

Test:U:24.00V I:0.198A P:4.75W PF:1.000 Freq:0Hz Lamp Flux:336.18x1 lm		
NAME: 62411 2000-6500K	TYPE:	WEIGHT:
SPEC.:	DIM.:	SERIAL No.: 2025062602
MFR.:	SUR.:	Shielding Angle:



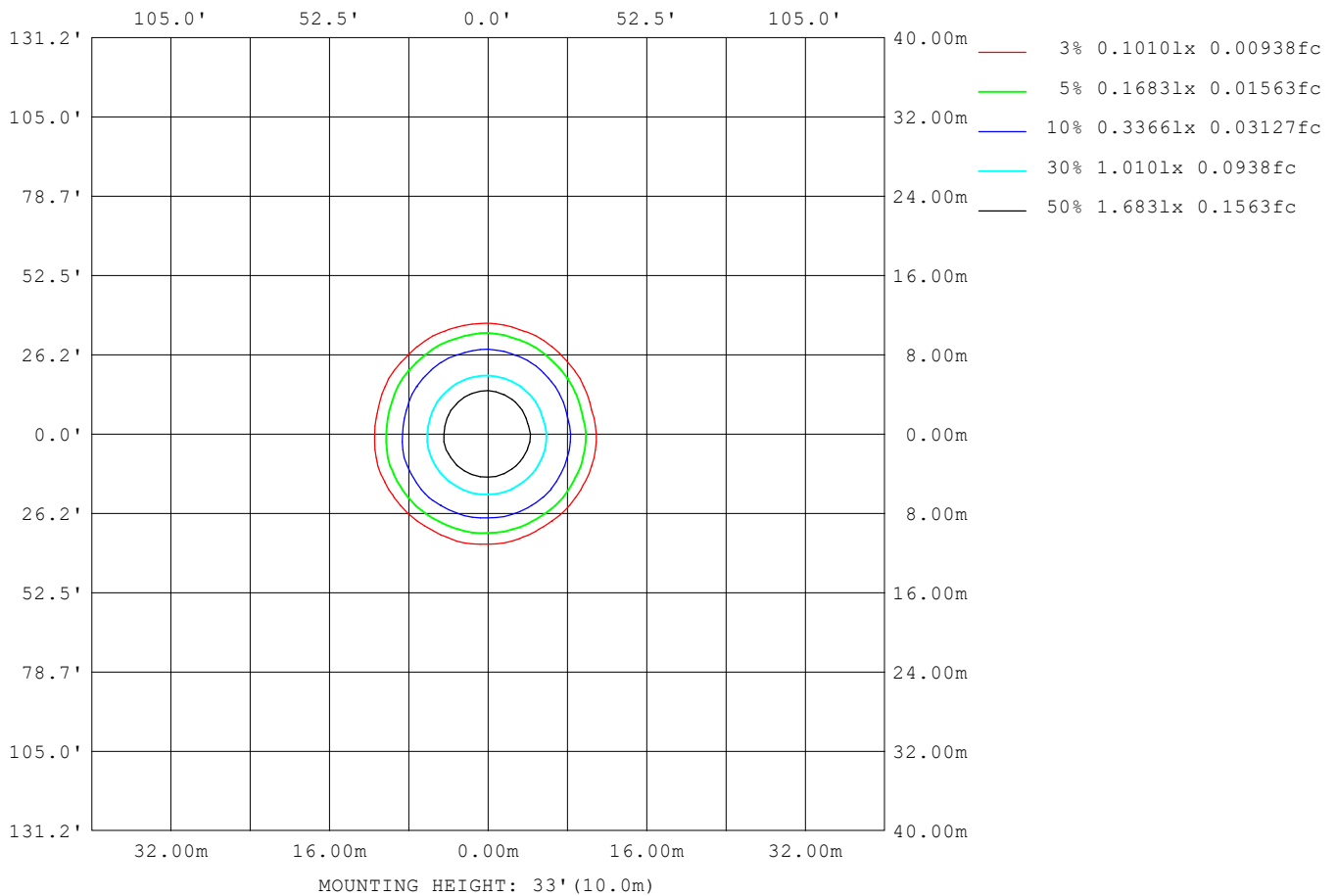
Note:The Curves indicate the illuminated area and the average illumination when the luminaire is at different distance.

C Range: 0 - 360DEG
C Interval: 15.0DEG
Test Speed: HIGH
Temperature:25DEG
Operators:SENPU
Test Date:2025-06-26

γ Range: 0 - 100DEG
 γ Interval: 1.0DEG
Test System:EVERFINE GO-2000B_V1 SYSTEM V2.00.444
Humidity:61%
Test Distance:8.000m [K=1.0000]
Remarks:

ISOLUX DIAGRAM

Test:U:24.00V I:0.198A P:4.75W PF:1.000 Freq:0Hz Lamp Flux:336.18x1 lm		
NAME: 62411 2000-6500K	TYPE:	WEIGHT:
SPEC.:	DIM.:	SERIAL No.: 2025062602
MFR.:	SUR.:	Shielding Angle:



C Range: 0 - 360DEG
C Interval: 15.0DEG
Test Speed: HIGH
Temperature: 25DEG
Operators: SENPU
Test Date: 2025-06-26

γ Range: 0 - 100DEG
 γ Interval: 1.0DEG
 γ Test System: EVERFINE GO-2000B_V1 SYSTEM V2.00.444
Humidity: 61%
Test Distance: 8.000m [K=1.0000]
Remarks:

LED Avg.L Report

Test:U:24.00V I:0.198A P:4.75W PF:1.000 Freq:0Hz Lamp Flux:336.18x1 lm		
NAME: 62411 2000-6500K	TYPE:	WEIGHT:
SPEC.:	DIM.:	SERIAL No.: 2025062602
MFR.:	SUR.:	Shielding Angle:

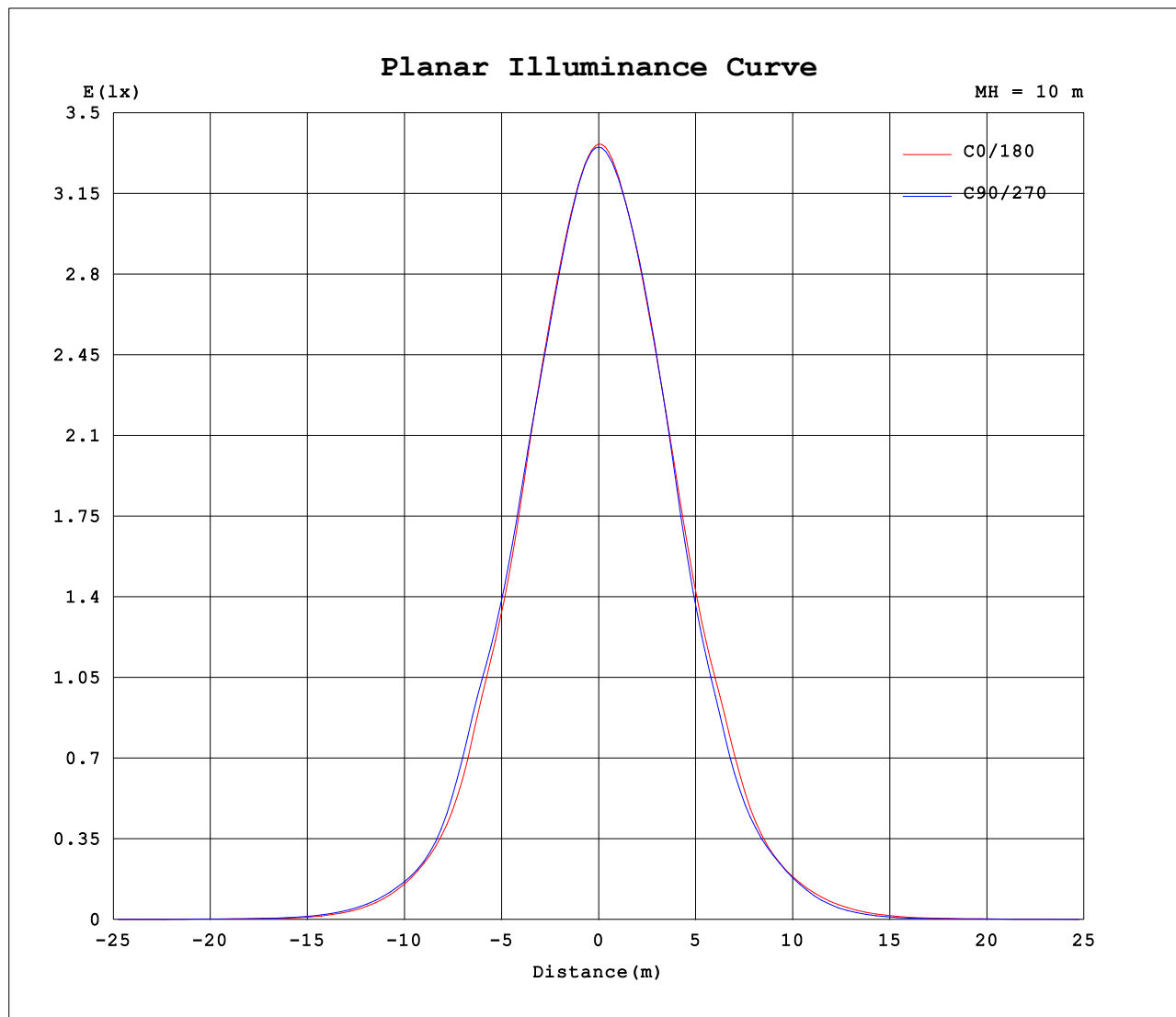
AvgL	cd/m2
L_0~180 (65) av	9353
L_0~180 (75) av	19363
L_0~180 (85) av	44754
L_90~270 (65) av	7116
L_90~270 (75) av	7190
L_90~270 (85) av	14601
L_45 (65) av	7327
L_45 (75) av	7418
L_45 (85) av	15026

Standard: GB/T 29293-2012

C Range: 0 - 360DEG
C Interval: 15.0DEG
Test Speed: HIGH
Temperature:25DEG
Operators:SENPU
Test Date:2025-06-26

γ Range: 0 - 100DEG
γ Interval: 1.0DEG
Test System:EVERFINE GO-2000B_V1 SYSTEM V2.00.444
Humidity:61%
Test Distance:8.000m [K=1.0000]
Remarks:

Planar Illuminance Curve



C Range: 0 - 360DEG
C Interval: 15.0DEG
Test Speed: HIGH
Temperature: 25DEG
Operators: SENPU
Test Date: 2025-06-26

γ Range: 0 - 100DEG
 γ Interval: 1.0DEG
Test System: EVERFINE GO-2000B_V1 SYSTEM V2.00.444
Humidity: 61%
Test Distance: 8.000m [K=1.0000]
Remarks:

LUMINOUS DISTRIBUTION INTENSITY DATA

Test:U:24.00V I:0.198A P:4.75W PF:1.000 Freq:0Hz Lamp Flux:336.18x1 lm		
NAME: 62411 2000-6500K	TYPE:	WEIGHT:
SPEC.:	DIM.:	SERIAL No.: 2025062602
MFR.:	SUR.:	Shielding Angle:

Table--1

UNIT: cd

C (DEG) γ (DEG)	0	15	30	45	60	75	90	105	120	135	150	165	180	195	210	225	240	255	270
0	337	336	336	336	335	335	335	335	335	335	335	335	337	336	336	336	335	335	335
5	327	327	326	326	326	327	327	328	328	329	330	330	330	329	330	329	329	328	329
10	307	306	304	305	303	305	305	308	309	311	312	314	312	311	313	312	313	312	313
15	279	279	276	277	275	278	277	280	280	284	285	290	287	286	288	287	290	288	289
20	242	244	240	241	240	245	245	248	247	252	253	258	254	252	255	253	256	252	253
25	198	201	199	202	201	205	205	209	210	214	214	218	213	210	212	209	210	206	205
30	162	165	165	168	168	171	171	174	174	178	177	178	173	171	171	168	168	164	163
35	111	116	116	121	121	128	128	134	133	137	135	139	130	127	128	124	122	117	116
40	70.8	72.9	73.2	77.2	75.9	77.2	75.6	80.3	82.8	88.3	87.3	88.6	82.2	80.5	83.9	83.0	83.3	79.3	78.3
45	43.9	44.7	43.8	45.1	43.8	45.9	46.9	49.0	50.0	53.8	54.4	56.1	52.9	51.9	53.9	52.0	52.2	50.7	51.4
50	22.3	22.9	22.5	23.2	22.9	24.9	25.7	27.5	27.6	29.6	30.7	32.7	30.2	29.7	31.2	28.9	28.7	25.7	25.1
55	8.78	9.65	10.7	10.2	10.0	10.9	11.1	12.3	12.7	14.1	15.2	15.6	13.5	12.9	14.1	12.0	11.5	9.63	9.45
60	4.09	4.55	4.94	4.11	4.13	4.38	4.44	4.88	5.06	5.67	7.85	7.13	5.38	5.23	5.33	4.27	4.06	3.84	3.73
65	3.60	4.03	3.67	2.92	2.97	2.90	3.00	3.06	3.26	3.42	4.57	4.92	4.31	4.28	3.49	3.16	3.02	3.03	3.01
70	4.23	4.69	2.54	2.27	2.29	2.19	2.28	2.33	2.50	2.60	3.08	5.22	4.53	4.37	2.59	2.43	2.30	2.42	2.44
75	5.12	5.38	2.02	1.80	1.79	1.66	1.74	1.77	1.90	1.97	2.27	5.60	4.91	4.53	1.92	1.81	1.74	1.90	1.98
80	4.88	2.29	1.71	1.49	1.43	1.28	1.37	1.34	1.46	1.47	1.80	2.87	4.62	1.99	1.40	1.33	1.29	1.51	1.62
85	4.19	2.14	1.60	1.27	1.22	1.10	1.14	1.09	1.21	1.17	1.45	1.72	3.61	1.39	1.07	0.98	0.97	1.25	1.40
90	0.33	0.37	0.41	0.26	0.26	0.47	0.68	0.93	1.06	1.03	1.28	3.00	0.48	0.18	0.12	0.11	0.07	0.05	0.05
95	0.23	0.32	0.30	0.27	0.23	0.21	0.22	0.23	0.21	0.24	0.28	0.30	0.10	0.10	0.12	0.09	0.07	0.05	0.05
100	0.26	0.26	0.37	0.27	0.26	0.22	0.24	0.24	0.22	0.24	0.28	0.30	0.10	0.10	0.11	0.09	0.07	0.05	0.05
105	0.00	0.00	0.00	0.00	0.00	0.00	0.00	0.00	0.00	0.00	0.00	0.00	0.00	0.00	0.00	0.00	0.00	0.00	0.00
110	0.00	0.00	0.00	0.00	0.00	0.00	0.00	0.00	0.00	0.00	0.00	0.00	0.00	0.00	0.00	0.00	0.00	0.00	0.00
115	0.00	0.00	0.00	0.00	0.00	0.00	0.00	0.00	0.00	0.00	0.00	0.00	0.00	0.00	0.00	0.00	0.00	0.00	0.00
120	0.00	0.00	0.00	0.00	0.00	0.00	0.00	0.00	0.00	0.00	0.00	0.00	0.00	0.00	0.00	0.00	0.00	0.00	0.00
125	0.00	0.00	0.00	0.00	0.00	0.00	0.00	0.00	0.00	0.00	0.00	0.00	0.00	0.00	0.00	0.00	0.00	0.00	0.00
130	0.00	0.00	0.00	0.00	0.00	0.00	0.00	0.00	0.00	0.00	0.00	0.00	0.00	0.00	0.00	0.00	0.00	0.00	0.00
135	0.00	0.00	0.00	0.00	0.00	0.00	0.00	0.00	0.00	0.00	0.00	0.00	0.00	0.00	0.00	0.00	0.00	0.00	0.00
140	0.00	0.00	0.00	0.00	0.00	0.00	0.00	0.00	0.00	0.00	0.00	0.00	0.00	0.00	0.00	0.00	0.00	0.00	0.00
145	0.00	0.00	0.00	0.00	0.00	0.00	0.00	0.00	0.00	0.00	0.00	0.00	0.00	0.00	0.00	0.00	0.00	0.00	0.00
150	0.00	0.00	0.00	0.00	0.00	0.00	0.00	0.00	0.00	0.00	0.00	0.00	0.00	0.00	0.00	0.00	0.00	0.00	0.00
155	0.00	0.00	0.00	0.00	0.00	0.00	0.00	0.00	0.00	0.00	0.00	0.00	0.00	0.00	0.00	0.00	0.00	0.00	0.00
160	0.00	0.00	0.00	0.00	0.00	0.00	0.00	0.00	0.00	0.00	0.00	0.00	0.00	0.00	0.00	0.00	0.00	0.00	0.00
165	0.00	0.00	0.00	0.00	0.00	0.00	0.00	0.00	0.00	0.00	0.00	0.00	0.00	0.00	0.00	0.00	0.00	0.00	0.00
170	0.00	0.00	0.00	0.00	0.00	0.00	0.00	0.00	0.00	0.00	0.00	0.00	0.00	0.00	0.00	0.00	0.00	0.00	0.00
175	0.00	0.00	0.00	0.00	0.00	0.00	0.00	0.00	0.00	0.00	0.00	0.00	0.00	0.00	0.00	0.00	0.00	0.00	0.00
180	0.00	0.00	0.00	0.00	0.00	0.00	0.00	0.00	0.00	0.00	0.00	0.00	0.00	0.00	0.00	0.00	0.00	0.00	0.00

C Range: 0 - 360DEG
C Interval: 15.0DEG
Test Speed: HIGH
Temperature:25DEG
Operators:SENPU
Test Date:2025-06-26

γ Range: 0 - 100DEG
γ Interval: 1.0DEG
Test System:EVERFINE GO-2000B_V1 SYSTEM V2.00.444
Humidity:61%
Test Distance:8.000m [K=1.0000]
Remarks:

LUMINOUS DISTRIBUTION INTENSITY DATA

Test:U:24.00V I:0.198A P:4.75W PF:1.000 Freq:0Hz Lamp Flux:336.18x1 lm		
NAME: 62411 2000-6500K	TYPE:	WEIGHT:
SPEC.:	DIM.:	SERIAL No.: 2025062602
MFR.:	SUR.:	Shielding Angle:

Table--2

UNIT: cd

C (DEG) γ (DEG)	285	300	315	330	345														
0	335	335	335	335	335														
5	327	327	325	325	324														
10	310	309	307	306	303														
15	285	283	278	278	275														
20	246	245	238	239	235														
25	199	199	195	195	191														
30	158	159	156	157	154														
35	112	112	109	109	104														
40	75.6	74.9	71.3	70.7	67.3														
45	47.6	46.0	42.4	42.5	40.3														
50	22.5	23.0	21.3	21.6	19.7														
55	8.13	8.37	7.62	8.76	7.99														
60	3.65	3.51	3.55	3.78	4.30														
65	3.00	2.87	2.89	2.94	3.76														
70	2.48	2.37	2.46	2.50	4.36														
75	2.09	2.02	2.11	2.13	4.35														
80	1.79	1.78	1.91	1.90	2.10														
85	1.66	1.64	1.82	1.82	1.87														
90	0.07	0.06	0.06	0.10	0.17														
95	0.07	0.06	0.06	0.10	0.10														
100	0.06	0.06	0.06	0.11	0.11														
105	0.00	0.00	0.00	0.00	0.00														
110	0.00	0.00	0.00	0.00	0.00														
115	0.00	0.00	0.00	0.00	0.00														
120	0.00	0.00	0.00	0.00	0.00														
125	0.00	0.00	0.00	0.00	0.00														
130	0.00	0.00	0.00	0.00	0.00														
135	0.00	0.00	0.00	0.00	0.00														
140	0.00	0.00	0.00	0.00	0.00														
145	0.00	0.00	0.00	0.00	0.00														
150	0.00	0.00	0.00	0.00	0.00														
155	0.00	0.00	0.00	0.00	0.00														
160	0.00	0.00	0.00	0.00	0.00														
165	0.00	0.00	0.00	0.00	0.00														
170	0.00	0.00	0.00	0.00	0.00														
175	0.00	0.00	0.00	0.00	0.00														
180	0.00	0.00	0.00	0.00	0.00														

C Range: 0 - 360DEG
 C Interval: 15.0DEG
 Test Speed: HIGH
 Temperature:25DEG
 Operators:SENPU
 Test Date:2025-06-26

γ Range: 0 - 100DEG
 γ Interval: 1.0DEG
 Test System:EVERFINE GO-2000B_V1 SYSTEM V2.00.444
 Humidity:61%
 Test Distance:8.000m [K=1.0000]
 Remarks: